

# ON THIS DAY ANGELS SING

for S.A.T.B. voices, accompanied\*

Words from *PLAE CANTIONES* (1582)  
Adapted by GREG GILPIN

Music by  
GREG GILPIN (ASCAP)

Gently, reverently (♩ = ca. 88-92)

ACCOMP.

*p*

4 SOPRANO 5 *p*

ALTO

TENOR

BASS

On this day earth shall ring with the song

*p* (Opt. accompaniment to m. 14)

8

ti - ny King, *mp*

chil - dren sing to the child, ti - ny King, *mp*

chil - dren sing

*cresc.* *mp*

\* Also available for S.A.B. voices, No. 17986.

Copyright © MCMXCVIII by Alfred Publishing Co., Inc.  
All rights reserved. Printed in USA.

THE CCLI LICENSE DOES NOT GRANT PERMISSION TO PHOTOCOPY THIS MUSIC.

11 *unis.* *dim.* *poco rit.*

born on earth to save \_\_\_ us, peace and love He gave \_\_\_ us.

*unis.* *dim.*

*dim.* *poco rit.* (play)

15 *a tempo*  
 Won - drous star o'er His head, Wise Men three

*mp*  
*p* *p*

Oo Oo

*a tempo*  
*p*

18 to Him led by His bed,  
 Kneel they low by His bed, \_\_\_

*mp*  
*mp*

*mp*

21 *unis.* *cresc.*

lay their gifts be - fore Him. Praise Him and a -

*unis.* *cresc.*

24 25 *mf*

dore Him. Glo - ri - a in ex-cel-sis De - o! In ex-cel-sis

*mf*

Glo - ri - a, glo - ri - a,

27 2. *decresc.*

De - o! Glo - ri - a! a!

*decresc.*

glo ri - a, glo - ri - a! a!

1. 2.

*decresc.*

30 *poco rit.*

31

*a tempo*

*mf*

On this day an - gels sing.

*mf*

*a tempo*

*poco rit.*  
*cresc.*

*mf*

33

*cresc.*

With their song — earth shall ring — sounds of joy

*cresc.*

earth shall ring

*cresc.*

36

*f*

*unis.*

to the King! Born on earth to save — us,

*f*

*unis.*

*rit.*

39

41 **f** *a tempo*

peace and love He gave us.

Glo - ri - a in ex-cel-sis

Glo - ri - a,  
*a tempo*

*rit.*

**f**

42

De - o! In ex-cel-sis De - o! Glo - ri - a!

glo - ri - a, glo - ri - a, glo ri - a!

47 **p** *Slower*  
*unis.*

45 *2. dim.*

*poco rit.*

On this day

*p unis.*

2.

*Slower*

*dim.*

*poco rit.*

*p*

48 rit.

an - gels sing. \_\_\_\_\_

The image shows a musical score for a choir and piano. The top system consists of a vocal line (treble and bass clefs) and a piano accompaniment line (treble and bass clefs). The vocal line has the lyrics 'an - gels sing.' with a long horizontal line underneath. The piano accompaniment features a melodic line in the right hand and a more rhythmic line in the left hand. The score is marked with a 'rit.' (ritardando) at the end of the first system and the beginning of the second system. A large red watermark 'Preview Only! Legal Use Requires Purchase' is overlaid diagonally across the page.

**On This Day Angels Sing** is a beautiful new setting of a traditional Latin text from the *Piae Cantiones* (1582), with English translation adapted by the composer. Appropriate for performance by both school and church choirs for holiday concerts and Christmas worship, it is available in both S.A.T.B. and S.A.B. voicings.

The “gloria in excelsis Deo” refrain (mm. 25-29 & 41-45) features gorgeous sequencing harmonies, evoking images of a heavenly angel choir singing “glory to God in the highest.” Performances of these sections may be further enhanced by the use of sign language. **The use of signing is optional but is highly recommended. For instructions, please see page 8.**

gloria	in	excelsis	Deo
GLAW-ree-ah	een	ehk-SHEHL-sees	DEH-aw

Both school and church choirs may wish to precede the performance of this work with the singing of the traditional Latin chant based upon the text, *Personent hodie*. For performance by church choirs, suggested corresponding lectionary readings include Psalm 85: 8-13, Isaiah 9: 1-6 & 40: 9-11, and Luke 2: 1-20.

**Greg Gilpin** is a widely published choral composer and arranger with a degree in vocal music education from Northwest Missouri State University. Frequently in demand as a choral clinician and choreographer, he is also involved in the gospel music industry as a songwriter and singer, working with artists such as Bill and Gloria Gaither, Ray Boltz and Sandi Patty.

Signs from **The Joy of Signing**, second edition, by Dr. Lottie L. Riekehof.  
 Copyrighted 1987 by Gospel Publishing House, Springfield, MO, USA.  
 All rights reserved by Gospel Publishing House. Used by permission.

The following signs may be used whenever the refrain "Gloria in excelsis Deo" (glory to God in the highest) is sung. Tenor and bass will sign "glory" while soprano and alto will sign "glory, God, heaven." For best effect, tenor and bass should be positioned together, and soprano and alto. The signs should be rhythmic, especially if the entire choir is signing.

**GLORIA**  
(glory)



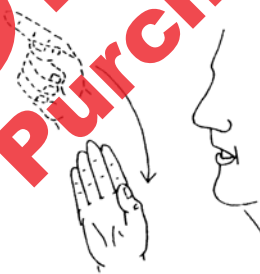
Clap right hand against left; lift right hand & make a large arc in front with right hand, shaking the hand as it moves.

**IN EXCELSIS**  
(in the highest,  
or in the highest heaven)



Open hands facing in, circle toward you, then pass right open hand under left hand & up, slightly above eye level (*opt. circle downturned palms around each other & draw them out to sides, slightly above eye level*)

**DEO**  
(God)



Make a "G" by pointing index & thumb out, curling remaining fingers in; point the "G" forward, draw it up and back down, opening the palm, which is facing left



Alfred Publishing Co., Inc.  
 16320 Roscoe Blvd., Suite 100 • P.O. Box 10003  
 Van Nuys, CA 91410-0003  
 alfred.com