

John 14: 6

Jesus said, "I am the way, the truth and the life."

Matthew 6: 33

*Seek first the kingdom of God and His righteousness,
and all these things will be given to you.*

Jesus Is the Answer/Seek Ye First is an inspired partnering of two well-known songs by Andraé Crouch and Karen Lafferty. Suitable for performance throughout the church year, it may be especially appropriate for evangelism, stewardship and confirmation. Suggested corresponding scripture readings include Proverbs 9: 1-12, Matthew 6: 33 & 7: 7-12, John 14: 1-6 and 1 Timothy 2: 1-7. One basic homiletical theme is committing oneself to obedience and service to God through His Son, Jesus Christ.

This 2-part any combination arrangement may be performed by treble or mixed voices, or by two choirs, each assigned to a different part. Congregational singing is also encouraged on the melody in the final verse (mm. 47-62).

Benjamin Harlan is Dean of the School of Church Music at Southwestern Baptist Theological Seminary in Fort Worth, Texas. With degrees from Baylor University and Southwestern Baptist Theological Seminary, Dr. Harlan is a widely celebrated church choral composer, arranger, and clinician.

The publisher hereby grants permission to reprint the text of this anthem for the purpose of performance with the congregation provided that a sufficient quantity of copies is purchased for the choir.

JESUS IS THE ANSWER/ SEEK YE FIRST

for 2-part any combination voices, accompanied,
with descant and opt. congregation*

Arranged by
BENJAMIN HARLAN

Words and Music by
ANDRAÉ CROUCH ("Jesus Is the Answer")
and **KAREN LAFFERTY** ("Seek Ye First")

Gentle, folklike rhythm (♩ = ca. 60-66)

ACCOMP.

N.C. Ab Eb/G

4 Fm7 Eb/G Ab Ab/Bb Eb

7 PART I 9 *mf*

PART II *mf*

Je - sus is the an -

Bb F7sus/C Bb/D Bb F7sus/C Bb/D Eb

* Also available for S.A.T.B. voices, No. 19111, and S.A.B. voices, No. 19112. Parts for alto and tenor sax, 2 trumpets, 2 trombones, synthesizer, guitar, bass, drums, glockenspiel, tambourine, chimes, triangle and a director's score (No. 19115) and a full performance/accompaniment compact disc (No. 19114) are available separately.

"Jesus Is the Answer" Copyright © 1973 Bud John Songs, Inc. (Adm. by EMI Christian Music Publishing)
 "Seek Ye First" © 1972 Maranatha! Music (Adm. by The Copyright Company, Nashville, TN)
 All rights reserved. International copyright secured. Used by permission. Printed in USA.
 SOLE SELLING AGENT FOR THIS ARRANGEMENT: ALFRED PUBLISHING CO., INC.

10

- swer_ for the world to - day. _

mf

Bb/D Ab Eb A -

13

Je - sus is _ the way..

bove Him there's _ no oth - er, _

Ab Eb/G Fm7

16 17

Je - sus is _ the an - swer _

He is _ the way.

Bb F7sus/C Bb/D Eb Bb/D

19

for the world to - day. —

mf

A - bove Him there's no

Ab Eb Ab

22

Je - sus is the way. —

oth - er; — Je - sus is the way. —

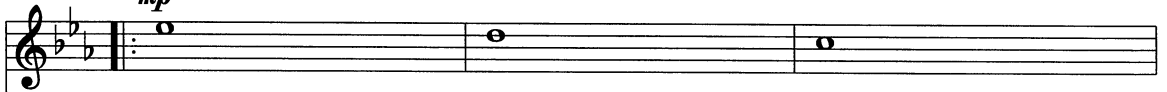
Eb/G Ab Ab/Bb Eb

25

Bb/Eb Ab/C Bb F7sus/C Bb/D Bb F7sus/C Bb/D

29 DESCANT (sing 3rd time only)

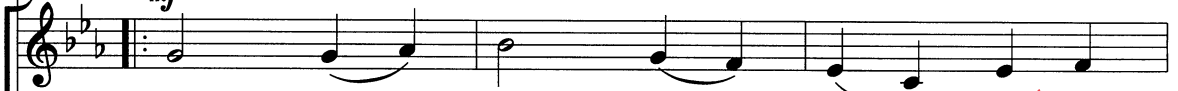
mp



Al - le - lu -

PART I (sing all 3 times)

mf



Seek ye — first the — king - dom of

PART II (sing 2nd and 3rd times)

mf



Je - sus is — the an - swer — for the world to - day.

29

E \flat

B \flat /D

A \flat



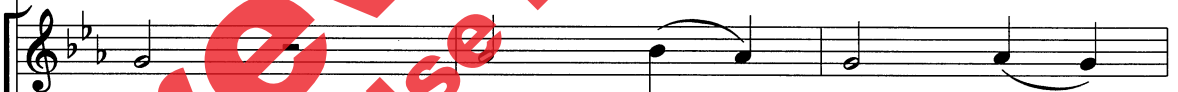
(play mm. 29-44 3 times)



32



ia, al - le -



God and His — right - eous -



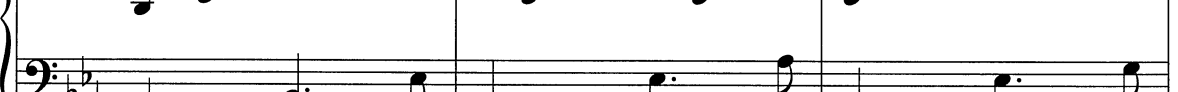
— A - bove Him there's — no oth - er; —

32

E \flat

A \flat

E \flat /G



35 37

lu - ia. Al -

ness, _____ And all these

Je - sus is _____ the way. _____ Je - sus is _____ the an

35 Fm7 Bb F7sus/C Bb/D Eb 37

38

le lu - ia,

things shall be add - ed un - to you.

- swer _____ for the world to - day. _____ A -

38 Bb/D Ab Eb

41

al - le - lu, al - le - lu -
Al - le - lu, al - le - lu -
bove Him there's no oth - er; Je - sus is the way

41 Ab Eb/G Fm7 Ab/Bb

Detailed description: This block contains the first system of music, measures 41-44. It features three vocal staves and a piano accompaniment. The vocal parts are in a three-part setting. The piano accompaniment is in the right and left hands. A large red watermark 'Preview Only' is overlaid diagonally across the page.

44 (end descant)

ia.
(to p. 6, m. 29)

ia.
(to p. 6, m. 29)

Detailed description: This block contains the second system of music, measures 44-47. It features three vocal staves and a piano accompaniment. The vocal parts have rests with repeat signs. The piano accompaniment has rests with repeat signs. A large red watermark 'Preview Only' is overlaid diagonally across the page.

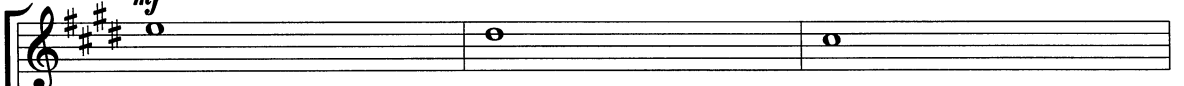
44 Eb A/B

cresc.

Detailed description: This block contains the third system of music, measures 44-47. It features three vocal staves and a piano accompaniment. The vocal parts have rests with repeat signs. The piano accompaniment has rests with repeat signs. A large red watermark 'Preview Only' is overlaid diagonally across the page.

47 (PART I)

mf



Al - le - lu -

(PART II)

f

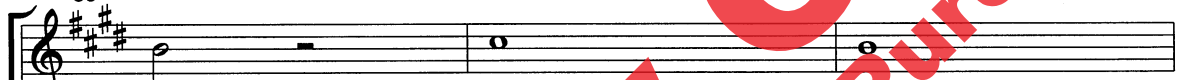


Je - sus is the an - swer for the world to - day.

E B/D# A



50



ia, al - le -

(PART II)

f



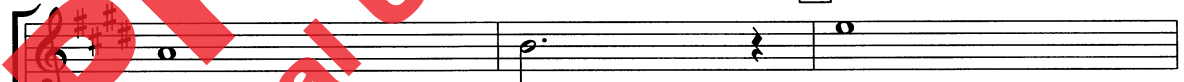
A - bove Him there's no oth - er;

E A E/G#



53

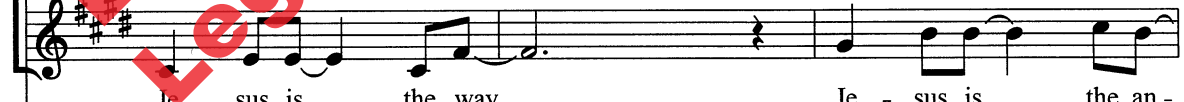
55



lu - ia. Al -

(PART II)

f



Je - sus is the way. Je - sus is the an -

F#m7 B F#7sus/C# B/D# E



56

le - lu - ia,

- swer_ for the world to - day. — A -

B/D# A E

59

al - le - lu, al - le lu -

bove Him there's no oth - er; — Je - sus is the way. —

A E/G# A A/B E

62

ia.

mf A -

mf A -

B/E A/C# Esus/B E/B

66

bove Him there's no oth - er; Je - sus

bove Him there's no oth - er; Je - sus

A F#m7 E/B F#7sus F#7 A E/G#

mf

70

is the way, *dim.*

is the way, *dim.*

F#7 A/B E A/E

73

rit. mp

He is the way.

mp

He is the way.

E A/E E

rit. mp

Preview Only
Legal Use Requires Purchase



Alfred Publishing Co., Inc.
16320 Roscoe Blvd., Suite 100
P.O. Box 10003
Van Nuys, CA 91410-0003
alfred.com