

ANGELS REJOICIN'

for 2-part voices, accompanied,
with opt. soloists and percussion*

*Traditional Caribbean text
adapted by* **PATRICK M. LIEBERGEN**

*Arranged from a Caribbean tune
by* **PATRICK M. LIEBERGEN**

Energetically and rhythmically in two ($\text{♩} = \text{ca. } 80-84$)

ACCOMP.

5
PART I *f*

PART II *f* Solo (opt. small ensemble) Tutti

Sing Now - ell! _____ Al - le - lu - ia, sing Now-ell! _____

Sing Now - ell! _____ Al - le - lu - ia, sing Now-ell! _____

9

Solo (opt. small ensemble) Tutti

Sing Now - ell! _____ Al - le - lu - ia, sing Now-ell! _____

Sing Now - ell! _____ Al - le - lu - ia, sing Now-ell! _____

* Also available for S.A.T.B. voices, No. 19171, and 3-part mixed voices, No. 19172.
Parts for 2 flutes, guitar, bass, drums, synthesizer, maracas, claves, tambourine, cowbell and director's score,
No. 19030, and a full performance/accompaniment compact disc, No. 19174, are available separately.

Copyright © MM by Alfred Publishing Co., Inc.
All rights reserved. Printed in USA.

THE CCLI LICENSE DOES NOT GRANT PERMISSION TO PHOTOCOPY THIS MUSIC.

13 Solo (opt. small ensemble)

Tutti

Sing Now - ell! ____ Al - le - lu - ia, sing Now-ell! ____

Al - le - lu - ia, sing Now-ell! ____

17 Solo (opt. small ensemble)

Tutti

Sing Now - ell! ____ Al - le - lu - ia, sing Now-ell! ____

Al - le - lu - ia, sing Now-ell! ____

Solo (opt. small ensemble)
mf

21

Oh, the

dim. *mf*

25

an - gels re - joic - in', the an - gels re - joic - in', the

29

Tutti
f

an - gels re - joic - in'! Al - le - lu - ia, sing Now-ell! —

Solo (opt. small ensemble)

f

mf

Al - le - lu - ia, sing Now-ell! — Oh, the

33

an - gels re - joic - in', the an - gels re - joic - in', the

37

f

He is born, Em-man - u-el! _____

f tutti

an - gels re - joic - in'! He is born, Em-man - u-el! _____

f

41

Sing Now - ell! _____ Al - le - lu - ia, sing Now-ell! _____

Sing Now - ell! _____ Al - le - lu - ia, sing Now-ell! _____

45

Sing Now - ell! _____ He is born, Em-man - u-el! _____

Sing Now - ell! _____ He is born, Em-man - u-el! _____

Sing Now - ell! Now the heav - ens_ re - joic - in'!

Sing Now - ell! Al - le - lu - ia, sing Now-ell! ___

Sing Now - ell! Now the heav - ens_ re - joic - in'!

61 DESCANT

Empty musical staff for the descant section.

PART I

Musical staff for Part I of the vocal line.

Sing Now - ell! He is born, Em - man - u - el! _____ Now the

PART II

Musical staff for Part II of the vocal line.

Sing Now - ell! He is born, Em - man - u - el! _____ Now the

Piano accompaniment for the first system, starting at measure 61.

65

f

Musical staff for the first vocal line of the second system.

Sing Now ell! The heav - ens _____ re -

Musical staff for the second vocal line of the second system.

heav - ens _____ re - joic - in', the heav - ens _____ re -

Musical staff for the third vocal line of the second system.

heav - ens _____ re - joic - in', the heav - ens _____ re -

65

Piano accompaniment for the second system, starting at measure 65.

68

joic - in'! Sing Now - ell! He is

joic - in', the heav - ens re - joic - in'! He is

joic - in', the heav - ens re - joic - in'! He is

68

71

72

(tacet)

born Em - man - u - el!

born Em - man - u - el!

Solo (opt. small ensemble)
mp

born Em - man - u - el! Oh, the an - gels

71

73

mp

Solo (opt. small ensemble)
mp

Tutti

75

Oh, the an - gels sing! Oh, the an - gels

sing!

Oh, the an - gels

Tutti

79

81

f

sing Now - ell! — Sing Now - ell! — Al - le -

sing Now - ell! —

Oh, the an - gels

f

83

lu - ia, sing Now-ell! — Sing Now - ell! — He is

sing!

Oh, the an - gels sing!

Oh, the an - gels

Solo (opt. small ensemble)

87

mf

born Em-man - u-el! _____

All the

Solo (opt. small ensemble)

mf

sing Em-man - u-el! _____

All the

Piano accompaniment for measures 87-90, featuring chords and melodic lines in both hands.

91

stars _____ re - joic - in', the stars _____ re - joic - in', the

stars _____ re - joic - in', the stars _____ re - joic - in', the

Piano accompaniment for measures 91-94, featuring chords and melodic lines in both hands.

95

Tutti
f

stars _____ re - joic - in'! Al - le - lu - ia, sing Now-ell! _____ Oh, the

Tutti
f

stars _____ re - joic - in'! Al - le - lu - ia, sing Now-ell! _____ Oh, the

Piano accompaniment for measures 95-98, featuring chords and melodic lines in both hands.

99 DESCANT

f



Sing Now - ell! The heav - ens__ re -

PART I



an - gels__ re - joic - in', the heav - ens__ re -

PART II



an - gels__ re - joic - in', the heav - ens__ re -

99



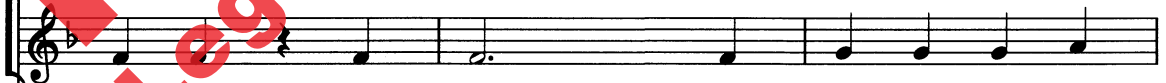
102



joic - in'! Sing Now - ell! He is



joic - in', the stars__ re - joic - in'! He is



joic in', the stars re - joic - in'! He is

102



12

105

born! Em-man - u - el!

born! Em-man - u - el!

born! Em-man - u - el!

105

ff

Angels Rejoice is a jubilant arrangement of a traditional Caribbean Christmas tune. Available in SATB, 3-part mixed and 2-part voicings, it is appropriate for performance by both school and church choirs and features optional instrumental accompaniment (available separately, No. 19030). Lively call-and-response between choir and solo or small ensemble may be enhanced in performance by placing the antiphonal singers across from each other.

For performance by church choirs, suggested corresponding scripture readings include Psalm 148: 1-4, Matthew 1: 18-23, Luke 2: 8-14 and Hebrews 12: 22-24. One basic homiletical theme is joining with all of the angels and the stars of heaven to proclaim Emmanuel's birth.

Patrick M. Liebergen is Director of Choral Activities at the University of Wisconsin (Stout). With music degrees from St. Norbert College in DePere, Wisconsin, the University of Wisconsin (Madison), and the University of Colorado (Boulder), he frequently appears throughout the country as an adjudicator and clinician. Dr. Liebergen has received choral composition awards from the Twin Cities Church Musicians' Association and the Wisconsin Choral Directors' Association, and his works are widely published and performed.

