

Thanks to Fatim and Okyerema Gyane-Kwame Ahima

MY MAKER'S WORLD

for 2-part any combination voices with descant and keyboard,
with opt. children's choir, audience/congregation and percussion*

Words by
MALTBIE DAVENPORT BABCOCK (1858-1901)
Adapted by
SHELDON CURRY

Traditional English Melody
TERRA BEATA
Arranged by
SHELDON CURRY

UNISON VOICES

With hushed intensity, in two (♩ = ca. 96)

KEYBOARD

With hushed intensity, in two (♩ = ca. 96)

(NOTE: If performing with additional instruments or recording, percussion begins 8 measures before measure 1.)

pp

5

is my Mak - er's world, and to my

10 13

lis - t'ning ears all na - ture sings, and

p

This

* Also available for S.A.T.B. voices, No. 22749.

Part for audience/congregational singing may be found on page 16.

Percussion parts, No. 22752, and a full performance/accompaniment compact disc, No. 22751, are available separately.

Copyright © MMIV by Alfred Publishing Co., Inc.
All Rights Reserved. Printed in USA.

THE CCLI LICENSE DOES NOT GRANT PERMISSION TO PHOTOCOPY THIS MUSIC.

15

'round me rings the mu - sic of the spheres.

20 PART I 21

This is my Mak - er's world: I

PART II

This is my Mak - er's world: I

p

25 29

rest me in the thought of rocks and

rest me in the thought of rocks and

30

trees, of ___ skies and seas; God's hand ___ the ___ won - ders ___

trees, of ___ skies and seas; *p* *A -

35

wrought. ___ This ___

san - te sa - na Mun - gu. Bwa - na a - si-fi - we! A -

mp

39

is my Mak - er's world: the ___

san - te sa - na Mun - gu. Bwa - na a - si-fi - we! A -

* Asante sana Mungu. (*ah-SAHN-teh SAH-nah MOON-goo*) = Many thanks, God.
Bwana asifiwe! (*BWAH-nah ah-si-FEE-weh*) = Praise the Lord!

43

birds their car - ols raise; the

san - te sa - na Mun - gu. Bwa - na a - si-fi - we! A -

47

morn - ing light, the lil - y bright de -

san - te sa - na Mun - gu. Bwa - na a - si-fi - we! A -

51

clare their Mak - er's praise. This

san - te sa - na Mun - gu. Bwa - na a - si-fi - we! This

mf

is my Mak - er's world: He —

is my Mak - er's world, *Tuim - be Hal - le - lu - jah! —

mf

shines in all that's fair; in the

Tuim - be hal - le - lu! A -

rus - tling grass I — hear Him pass; God

san - te sa - na Mun - gu. Bwa - na a - si - fi - we! A -

* Tuimbe Hallelujah! (*TWIIHM*-beh Hah-leh-*LOO*-yah) = Let's sing Hallelujah!

67

speaks to me ev - 'ry - where.

san - te sa - na Mun - gu. Bwa - na a - si - fi - we! A -

mf

71

san - te sa - na Mun - gu. Bwa - na a - si - fi -

mf

A -

74

san - te sa - na Mun - gu. Oh

- we! A - san - te sa - na Mun - gu.

77 DESCANT (a few strong voices, with opt.
children's choir, audience/congregation) *f*

79

This — is my Mak - er's

PART I

— A - san - te sa - na Mun - gu. Oh —

PART II

Bwa-na a - si-fi - we! A - san - te sa - na Mun - gu.

79

81

world. Oh — let me not for -

— A - san - te sa - na Mun - gu. Oh —

Bwa-na a - si-fi - we! A - san - te sa - na Mun - gu.

81

85 87

get that though the

A - san - te sa - na Mun - gu.

Bwa - na a - si - fi - we! A - san - te sa - na Mun -

Detailed description: This system contains the first two staves of music. The top staff is a vocal line in treble clef with a key signature of two flats (B-flat and E-flat). It begins at measure 85 with a whole note 'get', followed by a half rest, then a half note 'that', a half rest, a half note 'though', and a half note 'the'. Measure 87 is marked with a box containing the number 87. The bottom staff is a piano accompaniment in treble clef, starting with a half note 'A', followed by eighth notes 'san', 'te', 'sa', 'na', and a quarter note 'Mun', ending with a quarter rest 'gu.'. The piano accompaniment continues with eighth notes 'Bwa', 'na', 'a', 'si', 'fi', and a quarter note 'we!', followed by eighth notes 'A', 'san', 'te', 'sa', and a quarter note 'na', ending with a quarter note 'Mun'.

85 87

Detailed description: This system shows the piano accompaniment for the first system. The top staff is in treble clef and the bottom staff is in bass clef. Both have a key signature of two flats. The music consists of chords and moving lines in both hands, supporting the vocal melody.

88 87

wrong seems — oh so strong, God

Oh A - san - te sa - na Mun -

gu. Bwa - na a - si - fi - we! A -

88

Detailed description: This system contains the second two staves of music. The top staff is a vocal line in treble clef. It begins at measure 88 with a half note 'wrong', a half rest, a half note 'seems', a half rest, a half note 'oh', a half rest, a half note 'so', a half rest, a half note 'strong,', and a half note 'God'. Measure 87 is marked with a box containing the number 87. The bottom staff is a piano accompaniment in treble clef. It begins with a half note 'Oh', followed by eighth notes 'A', 'san', 'te', 'sa', and a quarter note 'na', ending with a quarter note 'Mun'. The piano accompaniment continues with eighth notes 'gu.', eighth notes 'Bwa', 'na', 'a', 'si', 'fi', and a quarter note 'we!', followed by eighth notes 'A'.

88

Detailed description: This system shows the piano accompaniment for the second system. The top staff is in treble clef and the bottom staff is in bass clef. Both have a key signature of two flats. The music consists of chords and moving lines in both hands, supporting the vocal melody.

91

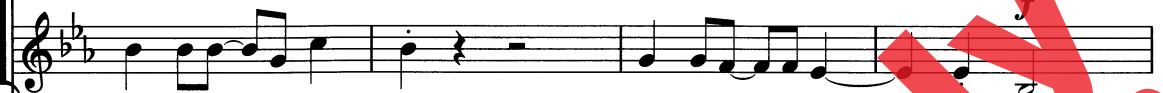
(stomp)



is the ruler yet. This



gu. Oh A-san-te sa-na Mun-



san-te sa-na Mun-gu. Bwa-na a-si-fi we! This



91

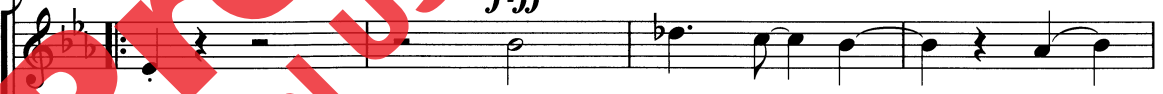
95

(clap)

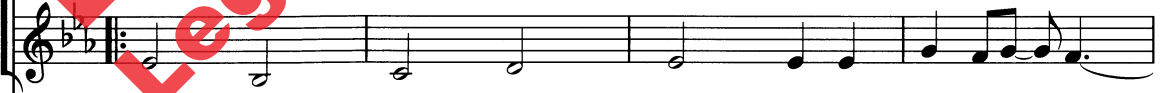
(2nd time: stomp)



is my Maker's world: why



gu. My Maker's world: why



is my Maker's world, Tuim-be Hal-le-lu-jah!



95

f-ff

8^{vb} 1

99 (2nd time: clap)

(both times: stomp)

should my heart be sad? The

should my heart, why should my heart be

Tuim-be hal - le-lu!

103 (both times: clap)

(2nd time: stomp)

Lord is King; let the heav - ens ring! God

sad? Let the heav - ens ring! God

san - te sa - na Mun - gu. Bwa - na a - si - fi - we! A -

107 (2nd time: clap)

1. (stomp) **ff**

Musical staff with notes and lyrics: reigns; let the earth be glad! This

reigns! A - san - te sa - na Mun -

1. **ff**

Musical staff with notes and lyrics: san - te sa - na Mun - gu. Bwa-na a - si-fi we! This

san - te sa - na Mun - gu. Bwa-na a - si-fi we! This

1. **ff**

Musical staff with notes and lyrics: A - san - te sa - na Mun - gu.

A - san - te sa - na Mun - gu.

1.

Piano accompaniment musical staff with notes and lyrics: Bwa-na a - si-fi we! This

107

113

(Children and Audience/Congregation end) (stomp) (clap)

Musical staff with notes and lyrics: glad!

glad!

2. *dim. poco a poco*

Musical staff with notes and lyrics: A - san - te sa - na Mun - gu.

A - san - te sa - na Mun - gu.

2. *dim. poco a poco*

Musical staff with notes and lyrics: Bwa - na a - si - fi - we! A - san - te sa - na Mun -

Bwa - na a - si - fi - we! A - san - te sa - na Mun -

2. 113

Piano accompaniment musical staff with notes and lyrics: *dim. poco a poco*

dim. poco a poco

114

(stomp) (clap)

Oh _____ A -

gu. Bwa - na a - si - fi - we! A - san - te sa - na Mun -

mf

114

My Mak - er's

san - te sa - na Mun - gu. Oh _____

gu. Bwa - na a - si - fi - we! A -

mp

118

121 (clap) *mp*

world.

mp

My Mak - er's world.

san - te sa - na Mun - gu. Bwa - na a - si - fi - we!

121 *mp*

Detailed description: This system contains the first two vocal staves and the piano accompaniment. The first vocal staff starts with a measure of rest followed by a long note with a slur. The second vocal staff has a similar pattern. The piano accompaniment features a rhythmic pattern of eighth and sixteenth notes. A large red watermark 'Preview Only' is overlaid diagonally across the page.

125 *pp*

pp

p *pp*

san - te sa - na Mun - gu. Bwa - na a - si - fi - we!

125 *p*

Detailed description: This system contains the second two vocal staves and the piano accompaniment. The first vocal staff has a long note with a slur. The second vocal staff has a similar pattern. The piano accompaniment continues with a rhythmic pattern. A large red watermark 'Preview Only' is overlaid diagonally across the page.

My Maker's World is a joyous, "multi-cultural" adaptation of the traditional hymn, *This Is My Father's World*. Drawing upon Swahili lyrics and folk music characteristics, it features layered rhythms and vocal lines, choral call-and-response, open octaves and fifths, and lively syncopation. Available in both S.A.T.B. and 2-part any combination (treble or mixed) voicings, it is suitable for performance by singers of all ages in both church and school.

When performed in worship, directors may, at their discretion, substitute the word "Father's" for "Maker's." Suggested corresponding scripture readings include Genesis 1 & 2, Job 38: 1-7, Psalm 8 & 24, and Hebrew 1: 1-12. Suitable for performance throughout the year, **My Maker's World** may be especially appropriate for Baptism of the Lord, Child Dedication, Lent, Trinity Sunday, World Communion and ecumenical services.

Sheldon Curry is the composer of hundreds of titles, both choral and instrumental, published in various catalogs. He is a graduate of Baylor University where he studied choral music with Robert Young and Euell Porter and composition with *Prix de Rome* winner Richard Willis. He has written music for recording artists and recorded original music for film and television, and is a two-time Grammy nominated record producer. In addition, he has directed church music for over 20 years. Sheldon lives in rural Tennessee.

Thanks to Fatim and Okyerema Gyane-Kwame Ahima

MY MAKER'S WORLD

for audience/congregation

Words by

MALTBIE DAVENPORT BABCOCK (1858-1901)

Adapted by

SHELDON CURRY

Traditional English Melody

TERRA BEATA

Arranged by

SHELDON CURRY

Verse 1: This is my Maker's world, and to my listening ears
(Choir only) all nature sings, and 'round me rings the music of the spheres.
This is my Maker's world: I rest me in the thought
of rocks and trees, of skies and seas; God's hand the wonders wrought.

Verse 2: This is my Maker's world: the birds their carols raise,
(Choir only) the morning light, the lily bright declare their Maker's praise.
This is my Maker's world: He shines in all that's fair;
in the rustling grass I hear Him pass; God speaks to me everywhere.

Verse 3: Choir & Audience/Congregation

This is my Mak - er's world. Oh

let me not for - get that though the wrong seems

oft so strong God is the rul - er yet. This

is my Mak - er's world. why should my heart be

sad? The Lord is King; let the heav - ens ring! God

reigns; let the earth be glad! This glad!

Postlude: My Maker's world.
(Choir only)

The publisher hereby grants permission to reprint only this page for the purpose of performance with audience/congregation provided that a sufficient quantity of copies is purchased for the choir.

Copyright © MMIV by Alfred Publishing Co., Inc.
All Rights Reserved. Printed in USA.

