

Christmas Peace Canon ingeniously blends the beloved traditional canon *Dona Nobis Pacem* with *Silent Night*, *Holy Night* and a newly composed melody, creating a charming partner song that is appropriate for both school and church choirs. Colorful harmonies and a soaring flute (optional) combine to create an unforgettable work for Christmas concerts or worship. The descant may be sung by a solo voice or a few voices.

The use of signing is optional but is highly recommended. While the signing may be performed by one person or a small group, all singers should join in the signing for best effect. For instructions, please see page 12. For performance by church choirs, suggested corresponding scripture readings include Psalm 85: 8-13, Isaiah 9: 1-6 & 40: 9-11, and Luke 2: 1-20.

Jean Anne Shafferman is Director of Church Choral Publications for Alfred Publishing Company. A graduate of the University of Kentucky with a B.M.E. in vocal music education and an M.A. in music theory, she is active as a church musician, clinician, and composer and has served as the Eastern Division Music in Worship Chairperson for the American Choral Directors Association.

for my mom, Doris Bryant Schalk

CHRISTMAS PEACE CANON

for 2-part mixed voices and keyboard,
with opt. descant and flute*Arranged by
JEAN ANNE SHAFFERMANIncorporating **DONA NOBIS PACEM**
and **SILENT NIGHT! HOLY NIGHT!**

© 1/7/13

Gently (♩ = ca. 100-104)

KEYBOARD

8^{va}

mp +Fl.

poco rit.

a tempo *mf*

6 UNISON VOICES © 2/8/14

mp 9

At Christ mas time the

(8)-----7 *loco*

mp -Fl.

11

an gels sing a song filled with love for the ti - ny

* A flute part appears on page 11. Signing instructions appear on page 12. Also available for S.A.T.B. voices, No. 17991, 3-part any combination voices, No. 17992, and Unison or 2-part voices, No. 17993. A full performance/accompaniment compact disc, No. 24391, is available separately.

Copyright © MCMXCVIII and This Edition MMVI by Alfred Music
All Rights Reserved. Produced in USA.

THE CCLI LICENSE DOES NOT GRANT PERMISSION TO PHOTOCOPY THIS MUSIC.

To purchase a full-length recording of this piece, go to alfred.com/downloads

16 17 *cresc.* *mf* *mp*

king, a song _____ of peace _____ and har - mo - ny, a

cresc. *mf* *mp*

21

song of peace _____ for you _____ and me.

+Fl.

25 © 3/9/15 *poco rit.*

poco rit.

30 WOMEN
mp a tempo

*Do - na no - bis pa - cem, pa - cem,

a tempo -Fl.

34

© 4/10/16

do - na — no - bis pa - cem.

38

WOMEN

Do - na no - bis pa - cem, pa - cem,

MEN *mp*

Do - na no - bis pa - cem,

* Traditional canon; DAW-nah NAW-bees PAH-chehm (Grant us peace.)

do - na no - bis pa - cem.

do - na no - bis pa - cem.

48

(mp)

Do - na

At Chris - mas time the

+Fl.

50

no - bis pa - cem, do - na no - bis

an - gels sing a song filled with love for the

54

56

pa - cem. Do - na

ti - ny king, a song of peace and

58

no - bis pa - cem, do - na no - bis

har - mo - ny, a song of peace for

62

*poco rit.**a tempo*© 6/12/18
rit.

pa - cem.

you and me.

poco rit. *cresc. a tempo* *rit.*

66 DESCANT (opt.)

67 Slightly slower

mp

Do - na, _____

WOMEN

Slightly slower

mf

*Si - lent night! Ho - ly

MEN

Si - lent night!

67 Slightly slower

mf

70

do - na

pa - cem,

night!

All is calm, all is bright

Ho - ly night! All is calm and bright

70

* STILLE NACHT; words by Joseph Mohr (1792-1848), translated by John F. Young (1820-1885);
music by Franz Gruber (1787-1863).

75



'Round yon vir - gin moth - er and child! Ho ly

'Round yon moth - er and child!

75



80

83

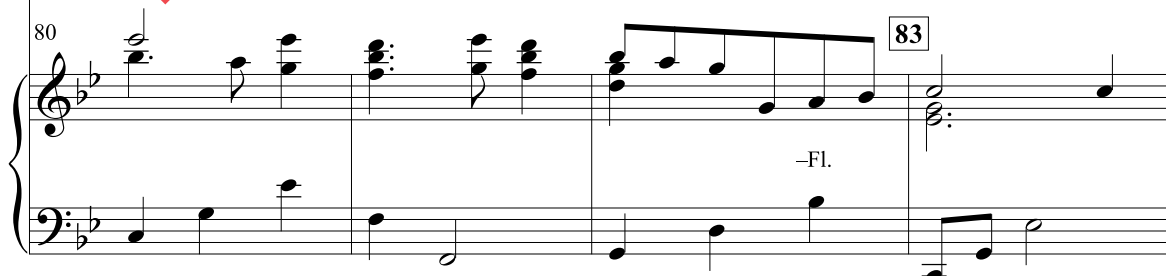
no bis pa cem,

in - fant, so ten - der and mild, sleep in

in - fant, ten - der and mild,

80

83



84 *mf* *rit. e dim.* *Slower mp*

do - na no - bis, sleep in

heav - en - ly peace, sleep in

do - na no - bis, sleep in

84 *rit. e dim.* *Slower mp*

88 *dim.* *poco rit.*

heav - en - ly peace.

heav - en - ly peace.

heav - en - ly peace.

88 *dim.* *+Fl.* *poco rit.* *p*

Red. *

for my mom, Doris Bryant Schalk

CHRISTMAS PEACE CANON

Arranged by
JEAN ANNE SHAFFERMAN

Incorporating *DONA NOBIS PACEM*
and *SILENT NIGHT! HOLY NIGHT!*

FLUTE

Gently (♩ = ca. 100-104) a tempo

mp poco rit. mp

6 9 17 mp

25 30 a tempo

31 38 10 48 mp

53 56

61 a tempo poco rit. cresc. rit.

67 Slightly slower mf mp

75

83 2 2 Slower 2 mp poco rit. p

rit.

Copyright © MCMXCVIII and This Edition MMVI by Alfred Music
All Rights Reserved. Produced in USA.

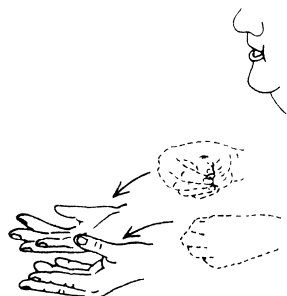
THE CCLI LICENSE DOES NOT GRANT PERMISSION TO PHOTOCOPY THIS MUSIC.

To purchase a full-length recording of this piece, go to alfred.com/downloads

Signs from **The Joy of Signing**, second edition, by Dr. Lottie L. Riekehof.
 Copyrighted 1987 by Gospel Publishing House, Springfield, MO, USA.
 All rights reserved by Gospel Publishing House. Used by permission.

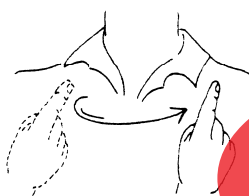
The following signs may be used whenever the Latin text, "Dona nobis pacem"
 (grant us peace) is sung, and in the final phrase, "Sleep in heavenly peace."

DONA (grant)



Closed hands facing down,
 turn in-up-forward & open

NOBIS (us)



Circle R index from R
 to L shoulder.
*(opt. - use closed index
 and middle finger "U")*

PACEM (peace)



R palm on L palm,
 turn over, then drop
 both down to sides

SLEEP



Draw open fingers down,
 closing finger tips at chin,
 bowing head slightly

HEAVEN (heavenly)



Open hands facing in, circle toward you,
 then pass right open hand under left hand
 & up, slightly above eye level
*(opt. - circle downturned palms around
 each other & draw them out to sides,
 slightly above eye level)*



alfred.com