

THAT FIRST NOWELL

for S.A.B. voices, accompanied,*
with optional flute**

Words by DON BESIG
and NANCY PRICE (ASCAP)

Music by
DON BESIG (ASCAP)

Flowing gently (♩ = ca. 100)

FLUTE (optional) *mp legato*

ACCOMP. *mp*

5

10 SOPRANO & ALTO *mp unis.*

High in the heav - ens a star burn - ing bright

(*tacet to m.* 35)

11

35

*Also available for S.A.T.B. voices, No. 4269, 2-part voices, No. 4271 and Unison or 2-part voices, No. 20957.

**Flute part may be found on pages 11 and 12.

Copyright © MCMXCII by Alfred Music
All rights reserved. Produced in USA.

15 S. 19

A.
brought the good news that first Christ-mas night.

B. *mp*

20 *mp*

they told of a Sav - ior, a
sing - ing of peace and good will;

25 27 *mf*

prom - ise ful filled. In ex-cel - sis De - o! In ex-cel - sis

30

De - o! Glo - ri - a, glo - ri - a De - o!

30

35 (FLUTE)

40

S.

A.

B.

44

mf unis.

That - first _____ *No -

mp

dim.

p

40

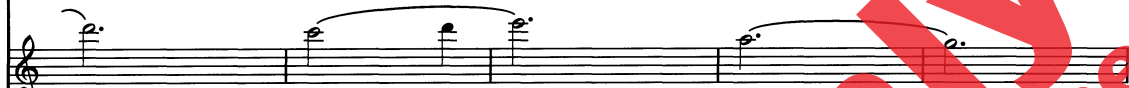
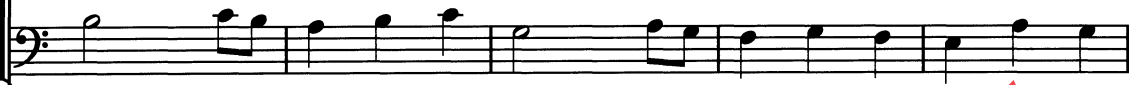
44

* Christmas, or Christmas joy.

45



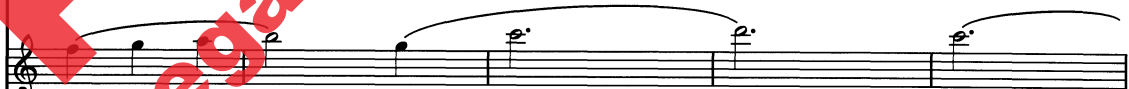
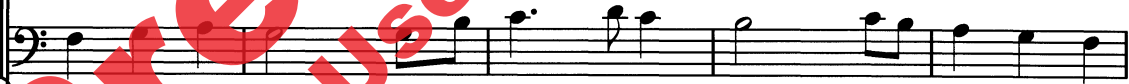
well on a night long a - go was to cer - tain poor shep - herds on



45



hill - sides be - low. They were tend - ing their - sheep in the cold win - ter



50



55

*f*unis.

air when the song of the an - gels rang out ev - 'ry - where: "No -

f

55

60

well! _____ No - well! No - well! _____ No - well! _____

60

64

68

Come and re - joice in the news that we tell!"

64

68

69

72

mf unis.

High in the heav - ens a

mf

69

72

74

star burn-ing bright tells us a - gain it's Christ-mas to -

74

79

80

night! The an - gels are sing - ing of peace and good will; the

79

80

Preview Only
 Legal use requires purchase

84

88

prom - ise of Christ-mas will stay with us _ still. In ex-cel - sis

This block contains the vocal and bass staves for measures 84 through 88. The vocal line is in treble clef and the bass line is in bass clef. The lyrics are: "prom - ise of Christ-mas will stay with us _ still. In ex-cel - sis".

84

88

This block contains the piano accompaniment for measures 84 through 88, consisting of a right-hand treble staff and a left-hand bass staff.

89

De - o! In ex-cel - sis De - o! Glo - ri - a, glo - ri - a

This block contains the vocal and bass staves for measures 89 through 88. The vocal line is in treble clef and the bass line is in bass clef. The lyrics are: "De - o! In ex-cel - sis De - o! Glo - ri - a, glo - ri - a".

89

This block contains the piano accompaniment for measures 89 through 88, consisting of a right-hand treble staff and a left-hand bass staff.

94 *f* 96 *cresc.*

De - o! No - well! No - well! No - well! No -

f *cresc.*

f *cresc.*

94 *f* 96 *cresc.*

99 *ff* 101

well! Glo - ri - a in ex - cel - sis

ff

ff

99 *ff* 101

104 (no ritard)

De - o!

(no ritard)

104 (no ritard)

That First Nowell is an anthem for Christmas Eve, Christmas Day and Christmastide that incorporates the beloved English carol, *The First Nowell*. It may be especially appropriate for a service of lessons and carols. Suggested corresponding scripture readings include Psalm 111, Isaiah 62: 1–11 and Luke 2: 1–20. One basic homiletical theme is praising the birth of the Redeemer King.

Don Besig is Director of Music at Perinton Presbyterian Church in Fairport, New York. He has over thirty years of experience teaching vocal music in the public schools of western New York. **Nancy Price** holds B.M. and M.M. degrees in music from Ithaca College. She began singing in elementary school choirs directed by Don Besig and in her senior year of college first worked with him as a lyricist. Since 1980 they have collaborated on over two hundred fifty compositions for school and church. Both Besig and Price have received several ASCAP Special awards.

That First Nowell

FLUTE

Music by DON BESIG

Flowing gently (♩ = ca. 100)

mp legato

2 3

7 11 8 19 8

27 8 35 *mp*

40 *dim.* *p* 44

46 52 *mp*

53

60 *f*

66 68 *mf*

72

78 80

84 88

90

96 101 *f* *cresc.* *ff*

102 (no ritard)

