

# Candlelight Christmas Canon

for S.A.T.B. voices, optional flute and string quartet, accompanied\*

Words quoting

“Silent Night! Holy Night!” by  
JOSEPH MOHR (1792-1848)

Music by

MARY MCDONALD

Based on

“Canon in D” by  
JOHANN PACHELBEL (1653-1706)

Gently (♩ = ca. 78)

⊕ flute

ACCOMP.

4 SOPRANO / ALTO

5 *p unis.*

Si - lent night, ho - ly night,

⊖ flute

7

all is calm, — all is bright 'round yon vir - gin

\* Part for Flute is on page 11-12.

Score and Parts for Flute and String Quartet is available separately: 080689 107085

© 2013 Word Music, LLC (ASCAP)  
All Rights Reserved. Used by Permission.

EVEN IF YOU POSSESS A CCLI LICENSE, YOU MAY NOT COPY THIS MUSIC.  
If you have questions about CCLI, please call 800/234-2446.

10

moth - er and Child. Ho - ly In - fant, so ten - der and mild,

13

sleep in heav - en - ly peace, sleep in heav - en - ly

16

peace Ho - ly night, dark - ness flies,

TENOR / BASS  
*mp unis.*

16

Si - lent night, ho - ly night, dark - ness flies,

⊕ flute

all is light. Shep - herds hear the an - gels sing,

all is light. Shep - herds hear the an - gels sing,

"Al - le - lu - ia! Hail the King!

"Al - le - lu - ia! Hail the King! Christ the Sav - ior is  
⊖ flute

*mf* Christ is born. *mp* Christ the Sav - ior is born."  
*mf* *mp*

born. Christ the Sav - ior is born."  
*mf* *mp* ⊕ flute

28 *mf* Si - lent night,  
Si - lent, si - lent night, ho - ly,

28 *mf*

31 ho - ly night, all is calm,

36

34 *mp* all bright!

36 *mp* *f*

Two empty musical staves, one for the treble clef and one for the bass clef, both in the key of D major.

Piano introduction. The right hand features a melodic line with grace notes, and the left hand provides a rhythmic accompaniment. The marking *dim. poco a poco* is present.

40 *mp unis.*

Si - lent night, ho - ly night, Son of God, \_\_\_\_\_

*mp unis.*

Vocal line and piano accompaniment for the first line of lyrics. The piano part continues with a steady accompaniment.

40 ⊖ flute

Si - lent night, \_\_\_\_\_ Son of God, \_\_\_\_\_

*mp*

Flute part (marked ⊖ flute) and piano accompaniment for the second line of lyrics. The piano part continues with a steady accompaniment.

43

love's pure light; ra - diant beams from Thy ho - ly face

*unis.*

Vocal line and piano accompaniment for the third line of lyrics. The piano part continues with a steady accompaniment.

love's pure light; ra - diant face, \_\_\_\_\_

⊕ flute

Flute part (marked ⊕ flute) and piano accompaniment for the fourth line of lyrics. The piano part continues with a steady accompaniment.



46

with the dawn\_ of re - deem - ing\_ grace, Je - sus, Lord, at Thy

49

*mf* birth, *mp* Je - sus, Lord, at Thy birth.

*mf* *mp*

52

*mf* Si - lent night, *mf* Si - lent, si - lent night, ho - ly,

*mf*



55

ho - ly night, *f* Son of God,

*f*

58

love's pure light. *mf*

*mf*

61

*p unis.*  
Si lent night, ho - ly night,

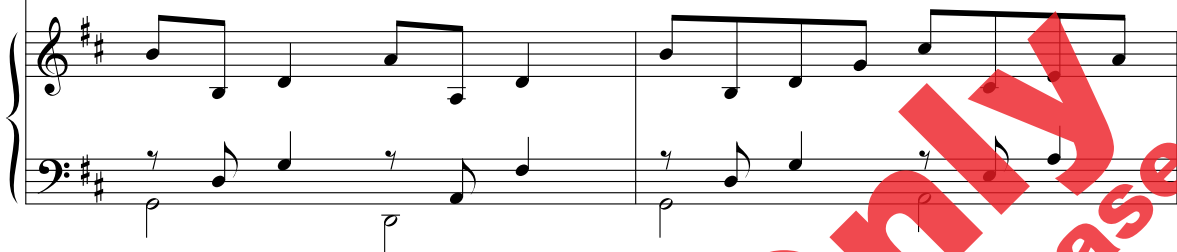
61

⊖ flute *p*



63

won - drous star, \_\_\_\_\_ lend thy light;



Piano accompaniment for measures 63-64. The right hand features a melodic line with eighth and quarter notes, while the left hand provides a steady bass line with quarter notes and rests.

65

with the an - gels let us sing,

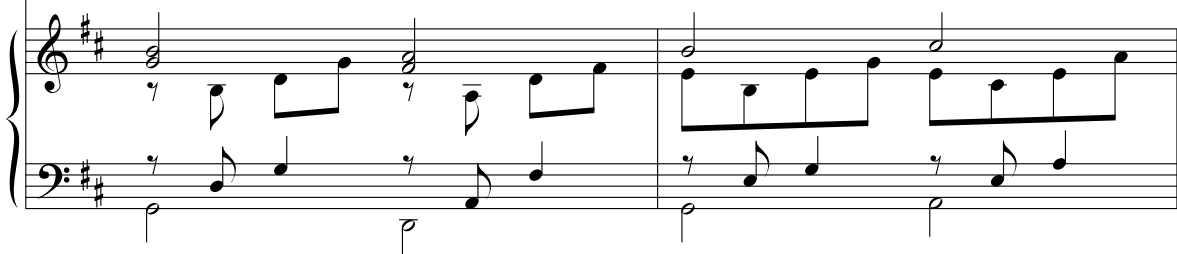
*p unis.*



Piano accompaniment for measures 65-66. The right hand continues the melodic line with eighth and quarter notes, and the left hand maintains the bass line with quarter notes and rests.

67

Al - le - lu - ia \_\_\_\_\_ to our \_\_\_\_\_ King.



Piano accompaniment for measures 67-68. The right hand features a melodic line with eighth and quarter notes, and the left hand provides a bass line with quarter notes and rests.



69

Christ the Sav - ior is born! Christ the

69

⊕ flute

72

Sav - ior is born, our Sav - ior!

75

*rit.*

*pp*

Christ the Sav ior is born!

*pp*

⊖ flute

⊕ flute

*rit.*

*pp*



# Candlelight Christmas Canon

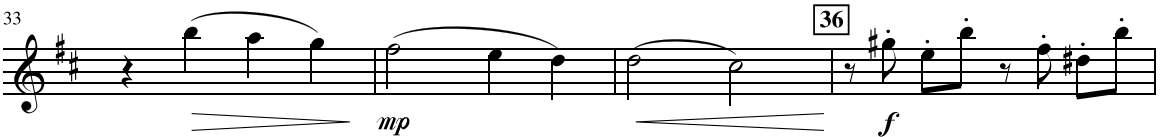
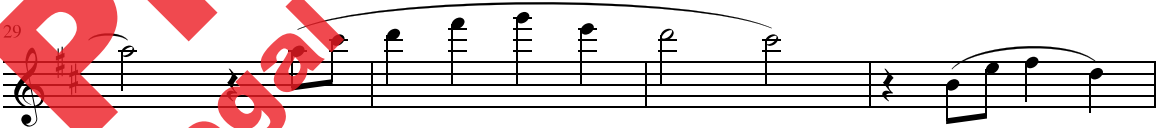
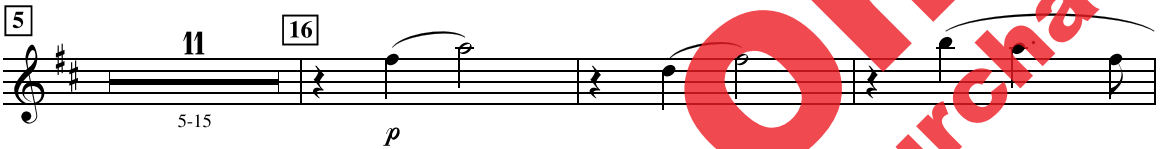
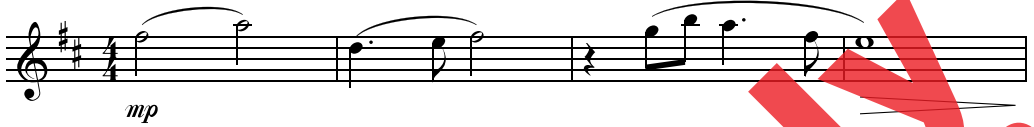
11

Words quoting  
"Silent Night! Holy Night!" by  
JOSEPH MOHR (1792-1848)

Music by  
MARY MCDONALD  
Based on  
"Canon in D" by  
JOHANN PACHELBEL (1653-1706)

## FLUTE

Gently (♩ = ca. 78)



© 2013 Word Music, LLC (ASCAP)  
All Rights Reserved. Used by Permission.

EVEN IF YOU POSSESS A CCLI LICENSE, YOU MAY NOT COPY THIS MUSIC.  
If you have questions about CCLI, please call 800/234-2446.

37 40 4 40-43 *p*

44 *mp*

48 *mf*

52 52 *tr* *p* 6

55 *f* *mf*

59 59 61 8 69 *p* 61-68 *p*

71 71

75 75

# Jubilate

MUSIC GROUP

Alfred Sacred • Jubilate Music • H.W. Gray

[jubilatemusic.com](http://jubilatemusic.com)

Exclusively Distributed by Alfred Music

