

(a lullaby for Christmas or general use)

SUO-GÂN

(Soothing Song)

for SATB voices and Solo (or Unison Choir) with optional accompaniment

Text by ROBERT BRYAN (alt. J.N.W.)

Music by ALAN WERIN
Arranged by JACK NOBLE WHITE

ACCOMP. *(optional)

Slowly (♩ = ca. 60)

mp

5 SOLO (opt. Unison Choir)

mp

Sleep, my dear one, sleep, my love-ly warm and co-zy, rest your head;

S
A
T
B

p

*If performed a cappella. omit measures 1-4 and 21-24.

9

Moth - er's lov - ing arms a - round you make a gen - tle lov - ing bed.

p

Ah

p

ah

13

mp

All shall nev - er touch thy sleep - ing, none dis - turb thy slum - ber deep;—

mp

*Soloist may sing with sopranos in measures 13-16 and 33-36.

17 (mp)

Sleep thou calm-ly, dar - ling ba-by, with your moth-er gent-ly sleep.

p *Su-o - gân, su - o - gân, ah

Ah Su - o - gân, su - o - gân, ah su - o - gân.

p

(Piano accompaniment for the first system)

(Piano accompaniment for the second system)

21

(Empty vocal staff)

(Empty vocal staff)

(Empty vocal staff)

mp

(Piano accompaniment for the third system)

*pronounced see-oh-gahn

25 *mp*

Qui - et slum-ber now shall bless thee with its beau-ty, sweet and deep;

p

29

Why, my love-ly, are you smil-ing, smil - ing ten-der - ly a - sleep?

p
Ah *ah*

33



mp



mp



37

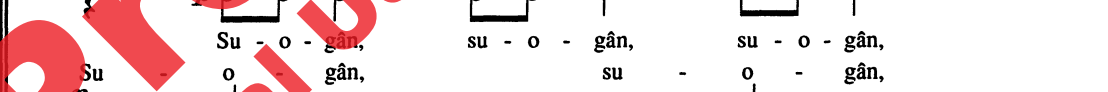
(mp)



p



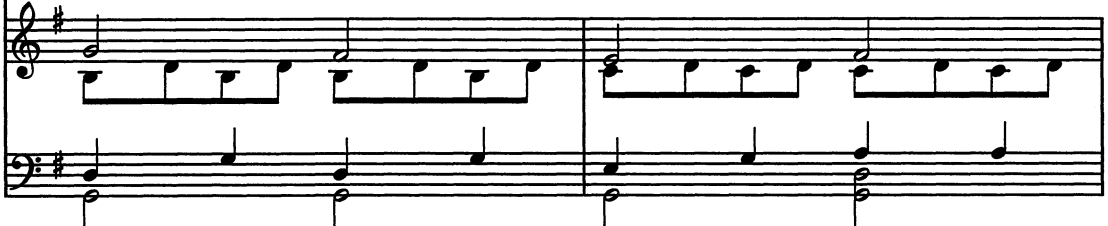
p



p



p



39

with your moth - er gent - ly sleep.

your
with your moth - er gent - ly sleep.

moth - er

42

Ah ————— Su - o - gân.
*(Christ is born.)

(p) Su - o - gân. —————
*(Christ is born.)

*alternate text in italics



Preview Only
Legal Use Requires Purchase



alfred.com